



## BE A BEAUTY INSIDER

Sephora is a visionary beauty-retail concept founded in France by Dominique Mandonnaud in 1970. Sephora's unique, open-sell environment features an ever-increasing amount of classic and emerging brands across a broad range of product categories including skincare, color, fragrance, body, smilecare, and haircare, in addition to Sephora's own private label.

Today, Sephora is not only the leading chain of perfume and cosmetics stores in France, but also a powerful beauty presence in countries around the world.

To build the most knowledgeable and professional team of product consultants in the beauty industry, Sephora developed "Science of Sephora." This program ensures that our team is skilled to identify skin types, have knowledge of skin physiology, the history of makeup, application techniques, the science of creating fragrances, and most importantly, how to interact with Sephora's diverse clientele.

[www.sephora.com](http://www.sephora.com)



**SEPHORA**   
THE BEAUTY AUTHORITY





a.



d.



b.



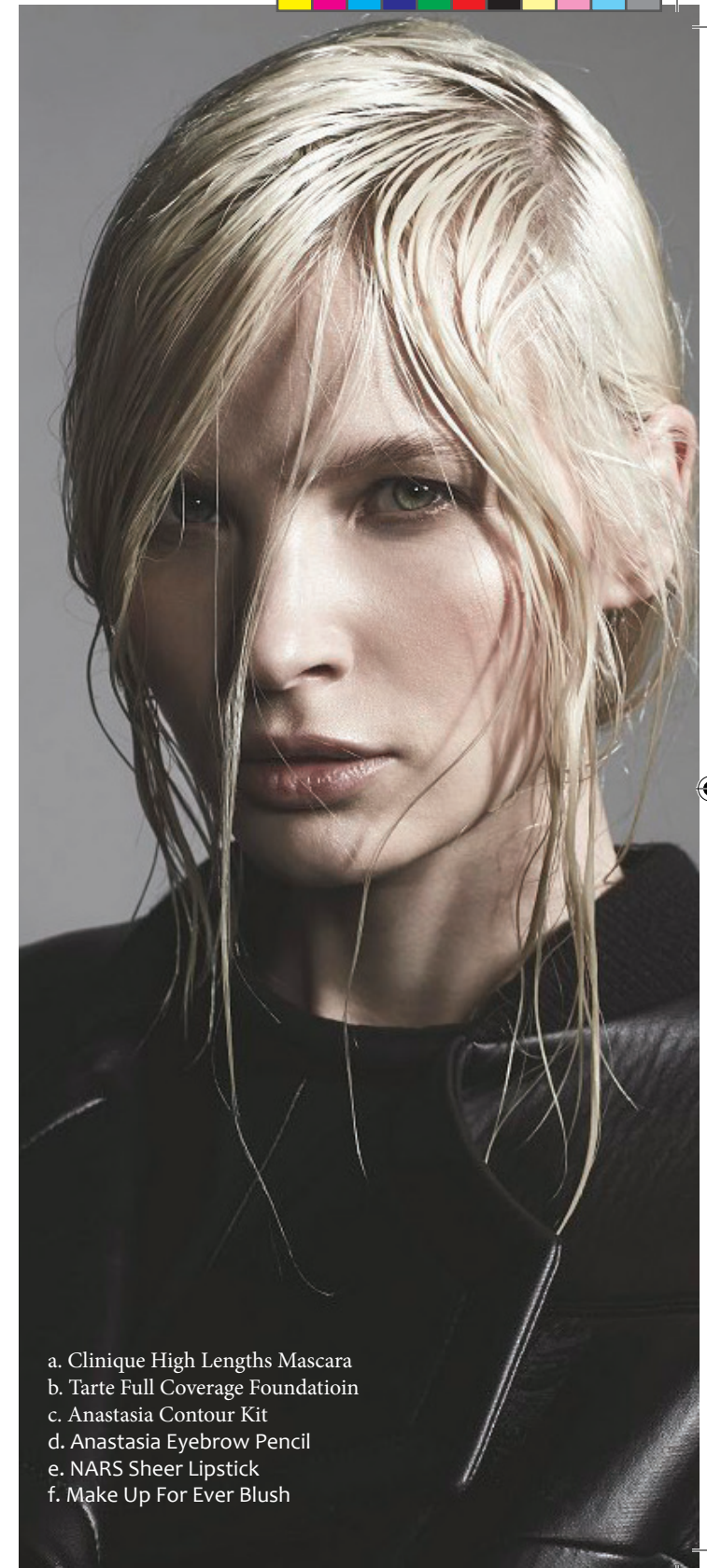
e.



c.



f.



- a. Clinique High Lengths Mascara
- b. Tarte Full Coverage Foundation
- c. Anastasia Contour Kit
- d. Anastasia Eyebrow Pencil
- e. NARS Sheer Lipstick
- f. Make Up For Ever Blush